

The logo for 'transform' features the word in a lowercase, sans-serif font. The letter 'o' is replaced by a stylized circular icon with a yellow and black gradient and a white swoosh.

AUTHENTIC DOCUMENT DELIVERY PLATFORM



Secure document exchange

Management of electronic signatures

Authentication of communicating parties

Confirmation of delivery

Form management

Background

The importance of collecting and transmitting data is continuously increasing. Global markets make the role of electronic trade and transactions, the exchange of information between people and organizations more and more essential.

TransForm is an integrated platform that transmits electronic data securely, in a legally binding form, via a transaction based communication channel.

Main features

- authentication of communicating parties
- managing of electronic signatures
- secure exchange of documents
- confirmation of receipt

Application areas

Use	Description
Electronic government	Form management Secure communication, A2A, A2B and A2C
Financial transactions	Transaction management Transmission of financial transactions protected with digital signatures
Electronic invoicing	Authentication, presentation and delivery of invoices and statements of account
Records management	Handling authenticated documents
Order processing	Protection of e business workflows, delivery of orders
Medical records	Protection of health care communication systems and security of data transmission

Functions of the TransForm system

1. Authentication of communicating parties

based on an existing user database, using various authentication methods, electronic signature technologies

Authentication module

authentication based on passwords, one-time-passwords, TAN lists, digital signatures, smart cards, Active Directory, other special interfaces

Session management

- strong session management
- single-sign-on capability

2. Managing electronic signatures

Managing advanced and qualified electronic signatures as required by local law

Generation and verification of client-side signatures

- one-time or mass-generated, simple or multiple signatures, verification on the client side
- as a standalone application, or integrated into a browser or other application (such as a mail client)

Signature generation and verification server

server-side signature creation and verification of large amounts of documents.

Interfacing with authentication providers

CRL, OCSP, certification path processing

Signature scheme and policy repository

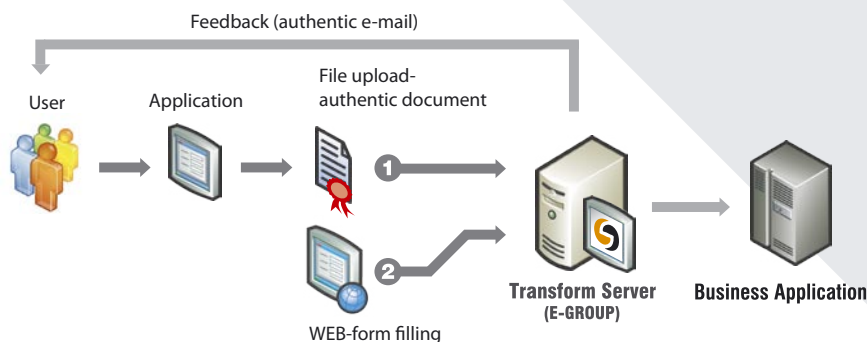
flexible, policy-based management of the electronic signature processes of incoming and outgoing documents

Timestamping

- timestamping incoming and outgoing documents
- guarantees non-repudiation
- certifies the time of the transactions
- certifies the existence of the documents

Long-term archiving functions

- managing the authentication processes necessary to provide long-term non-repudiation and authenticity
- keep legal value of stored documents



3. Secure Document of Exchange

Secure exchange of documents between two or several partners

Electronic transmission of file-based forms

capture of forms, uploading of documents through the web, centralized collection of forms, confirmation of receipt

Data is transmitted via secure channel (SSL)

confidentiality of data is assured, data compression

Central management of electronic mail

receipt, confirmation of client incoming mails, management through predefined workflows, access and escalation policies, management and sending of outgoing mail, confirmation of receipt by the addressee

Schema and policy concept repository

records the conceptual definition and schemas of forms, interfaces and process events for the whole organization. Applied Version control

Pre-validation of data

preliminary control of conformity of data with formal and structural requirements, prior to uploading

Data completion

electronic data prepared by the client may be enhanced or completed with additional data stored by the receiving organization

Workflow-integrator

- Connection to customer authentication and electronic signature management components, as well as document management policies of back end systems
- Intelligent routing to back end systems, flexible and version controlled management of related processes.

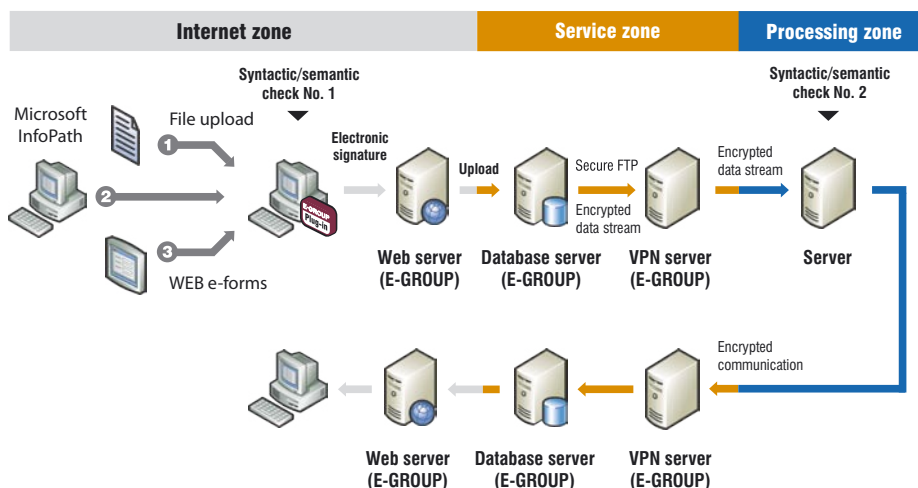
Benefits of using TransForm

Increasing the speed of form transmissions:

- speeding up data collection and data contributions
- making form transmissions more secure and reliable
- decreasing the error rate
- saving on working time
- meeting deadlines more easily
- saving on costs
- increasing customer satisfaction
- all obligations required by law can be fully observed
- document transmission made more secure
- significantly shorter administration time
- decreasing administration overhead
- better documentation
- more efficient administration (less errors)
- more efficient communication

Technical benefits

- all benefits of the PKI technology (authentication, non-repudiation, integrity, confidentiality) – securing data using electronic signatures
- producing qualified electronic signatures, if required;
- communication: via secure SSL channel
- economic use of resources: only a link to the document is transmitted
- automatic notification about new documents for the administrators
- acknowledged transmission and reception
- logging all activities regarding the transmission of documents
- storing the time of the various events related to the documents using a timestamping service
- potential collaboration and integration with other administration systems (or communication systems)
- automatic task routing, support for task lists
- support for collaboration
- follow-up for the administration processes, status reports
- generating electronic signatures using mobile phones
- statistics on visitors





E-Group

Address: Hauszmann u 3/a, Budapest 1117, Hungary, Europe
Phone: (+36-1) 371-2555

E-Group ICT Asia Ltd.

Address: The Gateway, 25 Canton Road, Tsimshatsui, Kowloon, Hong Kong
Phone: (+852) 986-08871

